

# GENESIS

CLASS 7 — GENESIS 6:1f





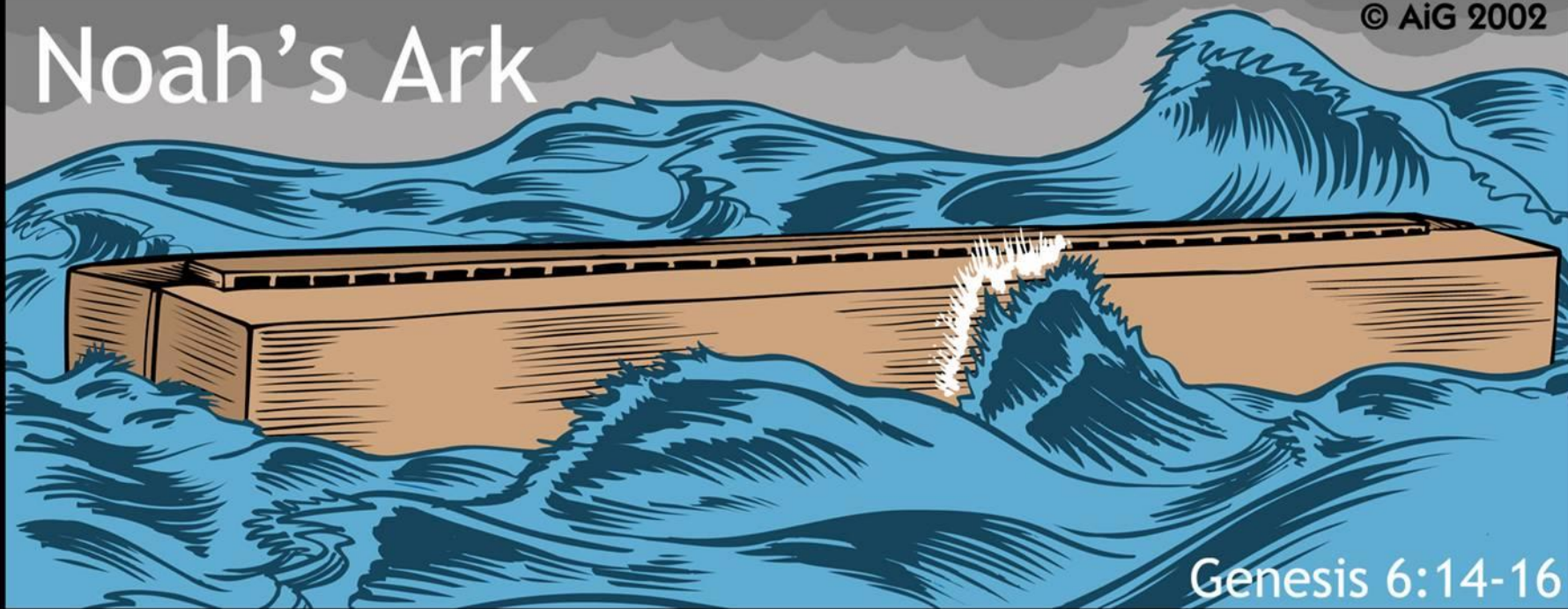






# Noah's Ark

© AiG 2002



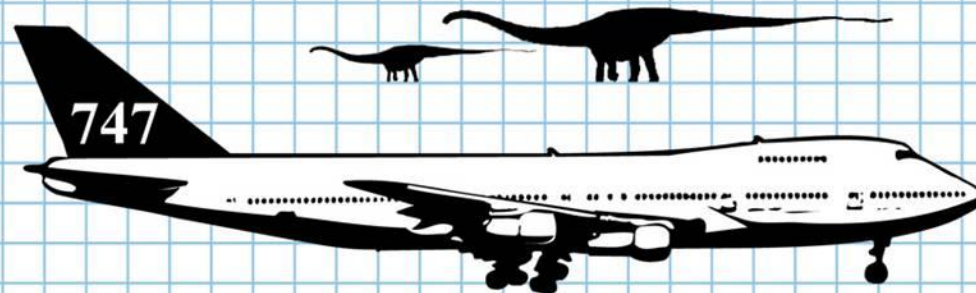
Genesis 6:14-16



73 ft wide



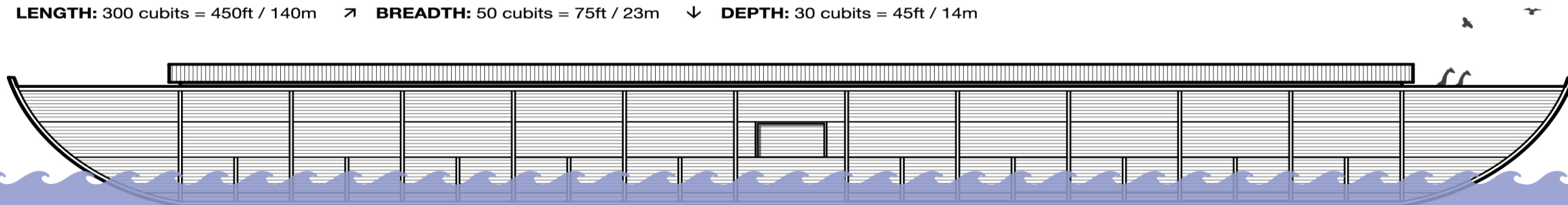
44 ft  
high





# NOAH'S ARK GENESIS 6-9

→ **LENGTH:** 300 cubits = 450ft / 140m    ↗ **BREADTH:** 50 cubits = 75ft / 23m    ↓ **DEPTH:** 30 cubits = 45ft / 14m



## ▶ THE WATERS INCREASE (150 DAYS)

**1**



**6:17, 22; 7:4-5**

God announces the coming flood. Noah obediently completes the building of the ark.

**2**



**7:7, 10, 13-14**

The flood begins and Noah enters the ark along with his family and the animals.

**3**



**7:11-12, 17**

Rain falls and the depths burst open for 40 days and nights. Every living thing on the face of the earth is consumed.

**4**



**7:24; 8:1-4**

The flood remains for 150 days. The ark comes to rest on the mountains of Ararat.

**5**



**8:5**

The waters subside until the tops of the mountains become visible.

**6**



**8:6-7**

Noah sends out a raven to scout for dry land.

## ▶ THE WATERS DECREASE (150 DAYS)

**7**



**8:8-9**

Noah sends out a dove. It returns to the ark without finding dry land.

**8**



**8:10-11**

Again Noah sends out the dove. This time it returns with an olive leaf.

**9**



**8:12**

Once more Noah sends out the dove. This time it does not return.

**10**



**8:3**

The waters fully subside from the earth.

## ▶ THE EARTH DRIES OUT (70 DAYS)

**11**



**8:13**

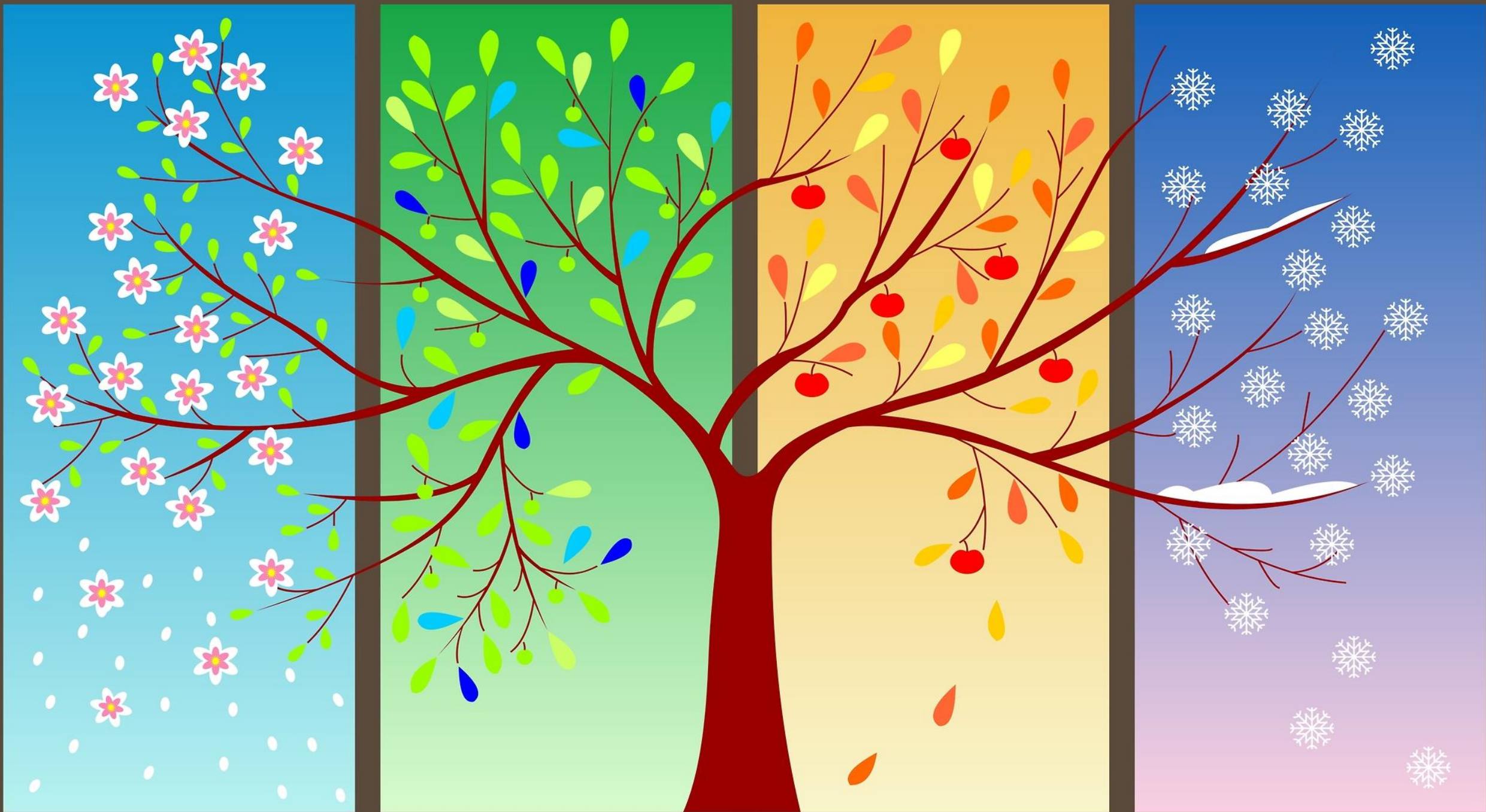
Noah removes the covering of the ark, after the face of the earth begins to dry.

**12**



**8:14-19**

God commands Noah to leave the ark, after the earth becomes fully dry.





**Only you shall not eat flesh with it  
life, that is, its blood. Surely I will  
require your lifeblood; from every  
beast I will require it. And from  
every man, from every man's brother  
I will require the life of man.  
Whoever sheds man's blood, by man  
his blood shall be shed, for in the  
image of God He made man.  
(Gen. 9:4-6)**